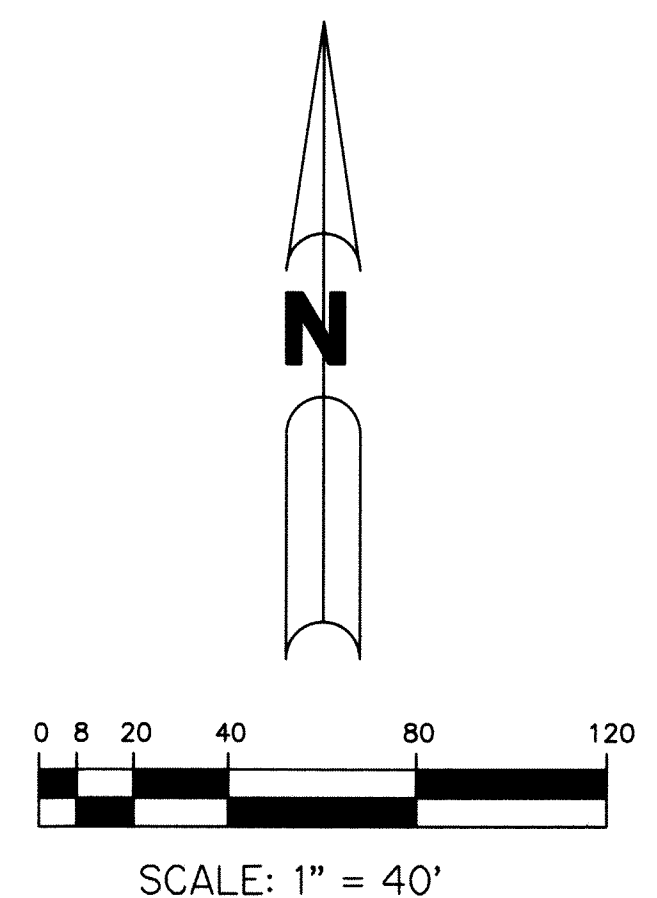
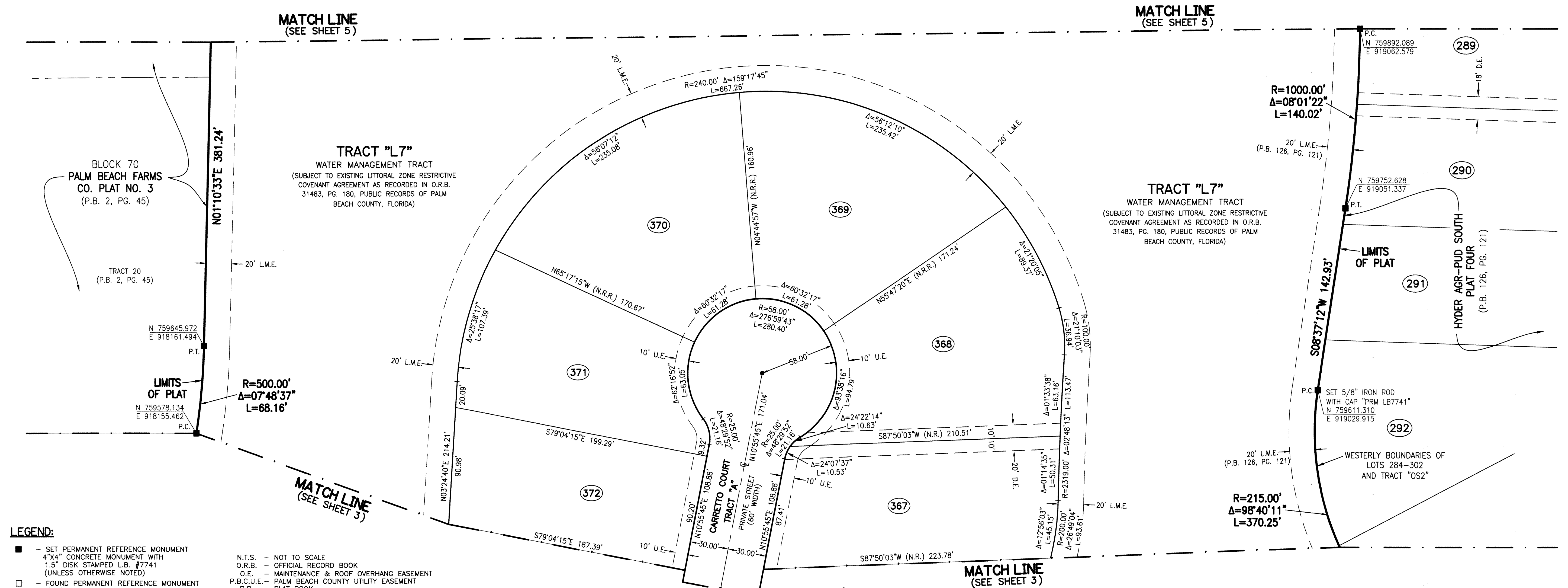


HYDER AGR-PUD SOUTH PLAT SIX

BEING A REPLAT OF ALL OF TRACT "L7", HYDER AGR-PUD SOUTH PLAT FOUR AS RECORDED IN PLAT BOOK 126, PAGES 121 THROUGH 125, TOGETHER WITH ALL OF TRACTS "OS1", "OS2", "OS4" AND A PORTION OF TRACT "A", HYDER AGR-PUD SOUTH PLAT FIVE, AS RECORDED IN PLAT BOOK 129, PAGES 123 THROUGH 128, TOGETHER WITH A PORTION OF TRACTS 11, 12, 13, 20, 21, 22, AND A PORTION OF A ROAD, DYKE AND DITCH RESERVATION, 30 FEET IN WIDTH, LYING ADJACENT TO AND SOUTH OF SAID TRACTS 20 AND 21, BLOCK 70, PALM BEACH FARMS CO. PLAT NO. 3, AS RECORDED IN PLAT BOOK 2, PAGES 45 THROUGH 54, ALL OF THE PUBLIC RECORDS, PALM BEACH COUNTY, FLORIDA, ALL LYING WITHIN SECTION 31, TOWNSHIP 46 SOUTH, RANGE 42 EAST, PALM BEACH COUNTY, FLORIDA.

SHEET 4 OF 6

11



THIS INSTRUMENT WAS PREPARED BY
PERRY C. WHITE, P.S.M. 4213, STATE OF FLORIDA
SAND & HILLS SURVEYING, INC.
8461 LAKE WORTH ROAD, SUITE 410
LAKE WORTH, FLORIDA 33467
LB-7741

NOTES:
COORDINATES SHOWN ARE GRID COORDINATES DATUM = NAD 83 (1990 ADJUSTMENT)
ZONE = FLORIDA EAST ZONE
LINEAR UNIT = U.S. SURVEY FEET
COORDINATE SYSTEM = 1983 STATE PLANE TRANSVERSE MERCATOR PROJECTION
ALL DISTANCES ARE GROUND (UNLESS OTHERWISE NOTED)
SCALE FACTOR = 1.00002237
PLAT BEARING = GRID BEARING
GROUND DISTANCE X SCALE FACTOR = GRID DISTANCE

